

FITTING GUIDE

TE203 TASSO EXHAUST 2020/01

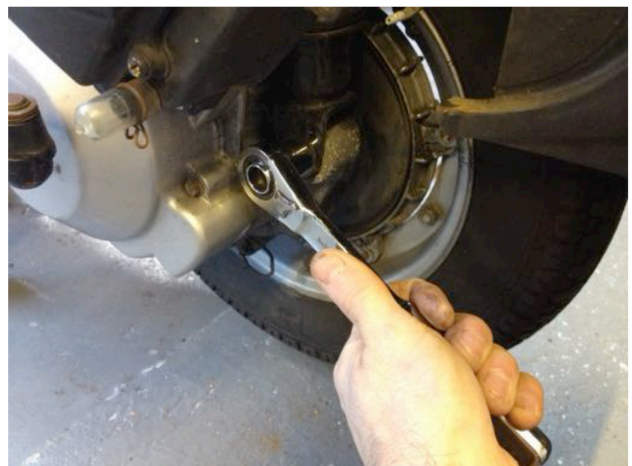
Thank you for purchasing a Tasso Exhaust. We recommend that you have this fitted by your local dealer or competent mechanic. This guide will help with fitting your kit. Technical specifications of the Tasso Exhaust TE203 and related products are subject to change without prior notice.

DISCLAIMER :

We accept no responsibility for damage to vehicle when fitting or using this product, for any damages consequential, incidental along with any expenses or injury directly or indirectly incurred from the use of this kit. It is important to ensure PRIOR TO INITIAL USE that you check all necessary fixings and screws and that they are properly secured. The onus is on the person who fits the kit to ensure that all nuts, fixings etc are secure prior to initial use.



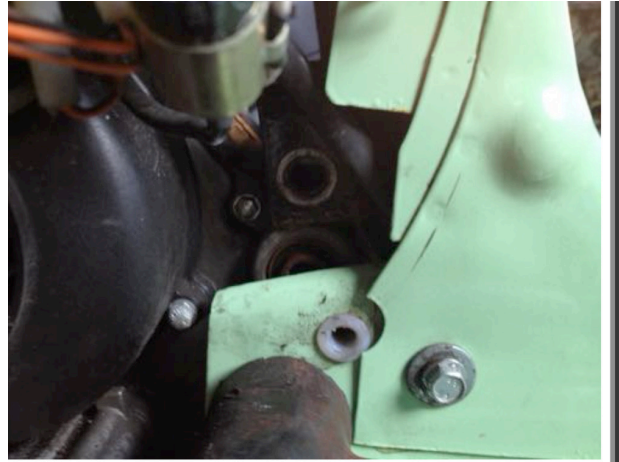
1) Place trolley jack underneath frame and raise to take weight of the scooter.



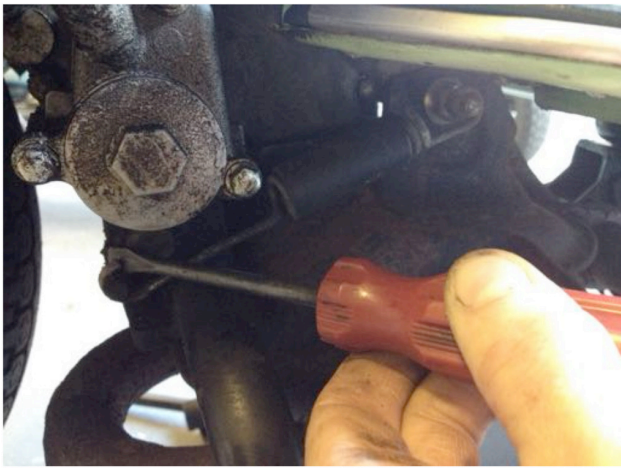
2) Unbolt and remove lower rear shock bolt



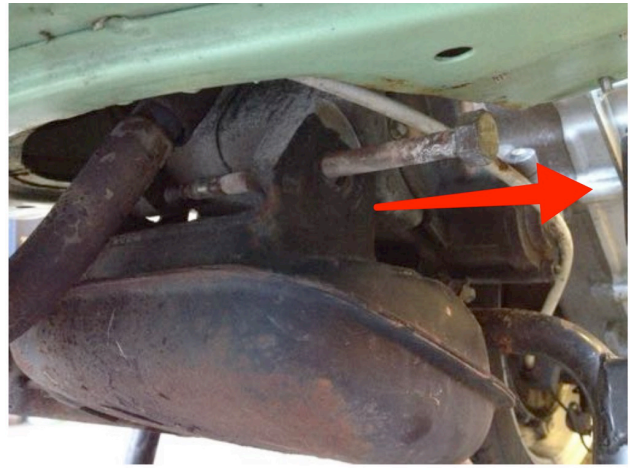
3) Unbolt and remove main engine bolt.



4) Raise trolley jack further to lift frame higher.



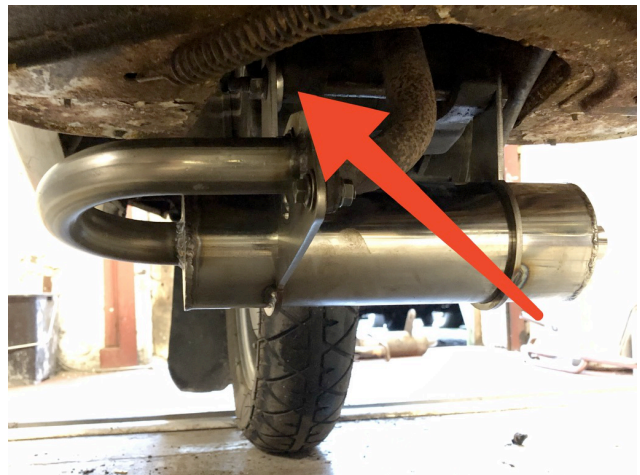
5) Unclip Stand Spring from exhaust bolt.



6) Unbolt exhaust bolt, slide out and remove.



7) Unbolt downpipe connection and replace gasket.



8) Fit TE203 insuring spacer supplied is fitted as shown



9) Rotate exhaust to align bolts and secure tightly.



10) Adjustment to idle (found underneath the seat) and to carburettor air mix screw for any deadspots in the throttle range.

ENJOY !

Please share your feedback on social media.