

FITTING GUIDE

TASSO EXHAUSTS TE302/TE303
2020/04

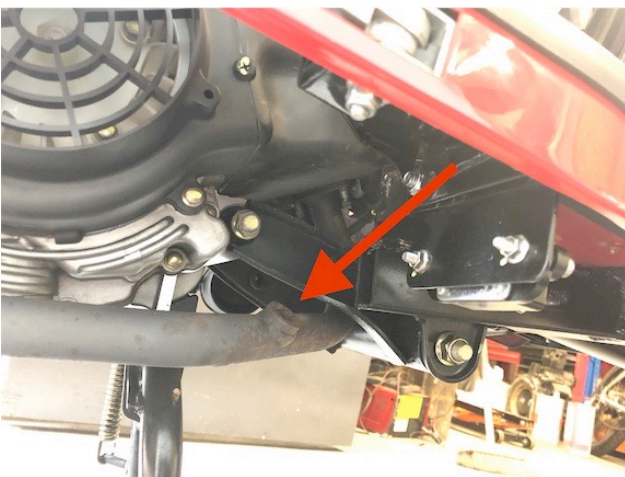
Thank you for purchasing a Tasso Exhaust. We recommend that you have this fitted by your local dealer or competent mechanic. This guide will help with fitting your exhaust. Technical specifications of Tasso exhaust systems and related products are subject to change without notice.



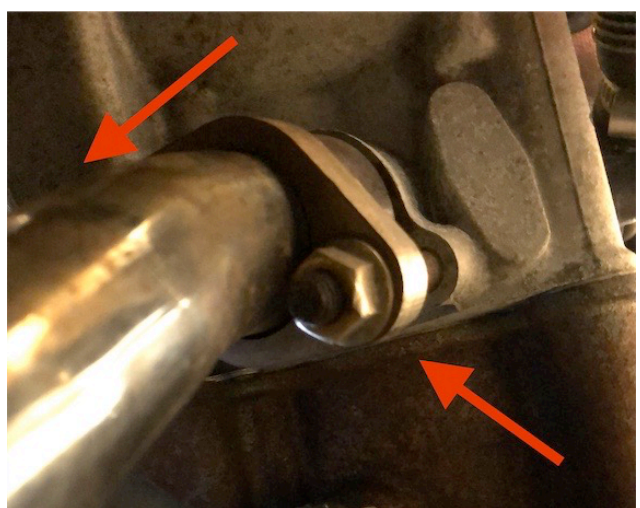
1) REMOVE RH SIDE PANEL



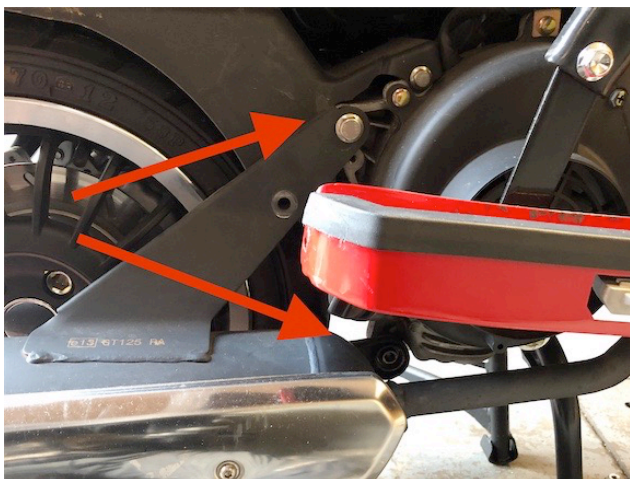
2) UNPLUG LAMBDA SENSOR (TE302 ONLY)



3) REMOVE LAMBDA SENSOR FROM DOWNPIPE (TE302 ONLY) DO NOT TOUCH SENSOR END



4) UNDO AND REMOVE M8 NUTS AT CYLINDER FLANGE. REMOVE OLD CRUSH GASKET.



5) UNDO M8 BOLTS SUPPORTING EXHAUST.



6) REMOVE EXHAUST FROM SCOOTER



7) REMOVE STAND STOP RUBBER



8) FIT RUBBER INTO STAND STOP BRACKET



9) FIT TASSO SUPPORT BRACKET TO ENGINE

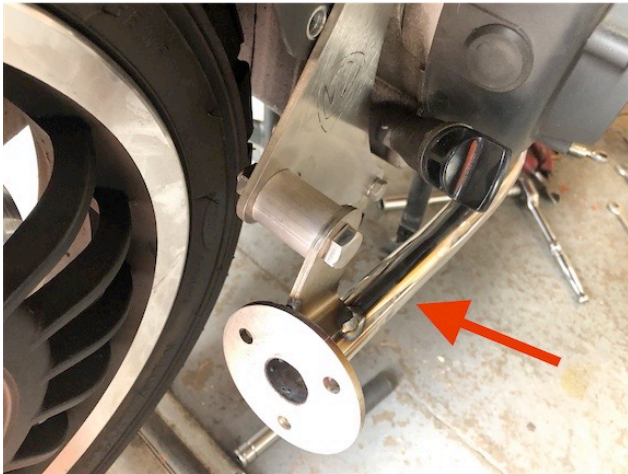


10) FIT M8 SPACER AND STAND STOP AS SHOWN

Awaiting picture

Awaiting picture

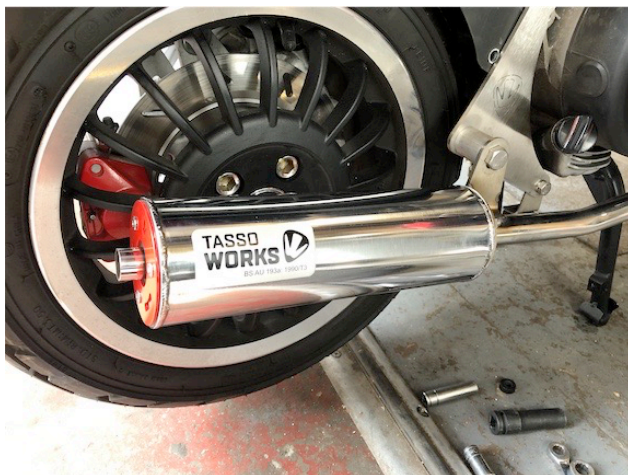
11) FIT COPPER GASKET INTO CYLINDER PORT



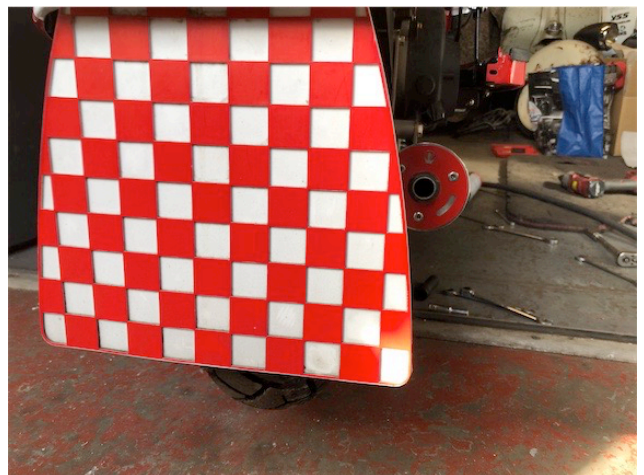
12) FIT DOWNPIPE AND LOOSELY TIGHTEN NUTS AT CYLINDER FLANGE



13) FIT DOWNPIPE TO SUPPORT BRACKET USING M10 SPACER. EVENLY TIGHTEN BOLT AND CYLINDER FLANGE NUTS



14) FIT LAMBDA SENSOR TO DOWNPIPE AND RECONNECT TO WIRING HARNESS



15) FIT MUFFLER TO DOWNPIPE WITH THE 3 x M8 NUTS PROVIDED



16) CHECK THERE ARE NO OBSTRUCTIONS BEFORE STARTING SCOOTER

We accept no responsibility for damage to motors when fitting or using this exhaust, for any damages consequential, incidental along with any expenses or injury directly or indirectly incurred from the use of the exhaust system. It is important to ensure PRIOR TO INITIAL USE that you check all necessary fixings and screws and that they are properly secured. The onus is on the person who fits the exhaust to ensure that all nuts, fixings etc are secure prior to initial use.