

Thank you for purchasing a Tasso Exhaust. We recommend that you have this fitted by your local dealer or competent mechanic. This guide will help with fitting your exhaust. Technical specifications of Tasso exhaust systems and related products are subject to change without notice.

#### *Disclaimer*

*We accept no responsibility for damage to motors when fitting or using this exhaust, for any damages consequential, incidental along with any expenses or injury directly or indirectly incurred from the use of the exhaust system. It is important to ensure PRIOR TO INITIAL USE that you check all necessary fixings and screws and that they are properly secured. The onus is on the person who fits the exhaust to ensure that all nuts, fixings, clearance and alignment prior to initial use.*



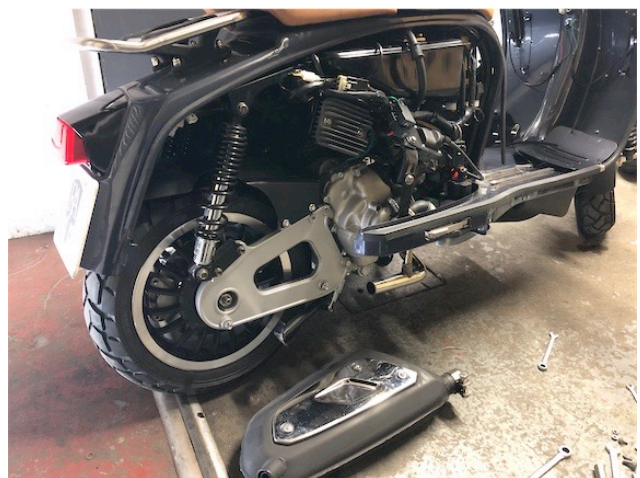
1) REMOVE RH SIDE PANEL



2) LOOSEN JOINING CLAMP

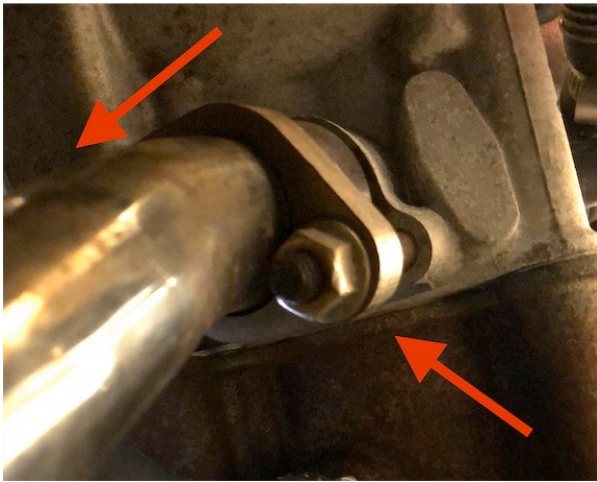


3) UNDO M8 BOLTS SUPPORTING EXHAUST.

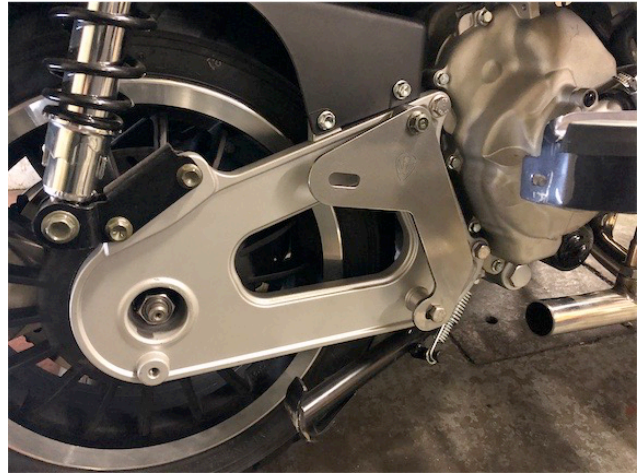


4) REMOVE MUFFLER SECTION FROM SCOOTER

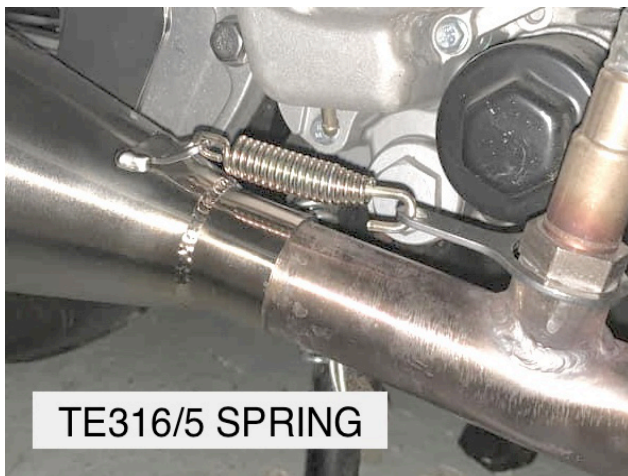




5) LOOSEN SLIGHTLY NUTS AT CYLINDER FLANGE TO ALLOW MOVEMENT OF DOWNPIPE



6) FIT SUPPORT PLATE USING SPACERS PROVIDED BETWEEN PLATE AND BRACKET  
For 300 use 5mm top, 10mm bottom.  
For 125/200 use 10mm top, 15mm bottom



TE316/5 SPRING



7) SLIDE MUFFLER ON AS FAR AS POSSIBLE SO BRACKET HOLE ALIGNS WITH SUPPORT PLATE HOLE. FIT SPRING LOOP OVER LAMBDA BOSS AND HOOK ON SPRING AS SHOWN ABOVE.

8) SUPPORT MUFFLER WEIGHT WHILE FITTING LARGE M10 SUPPORT SPACER, FIT SUPPORT WASHER UNDER BOLT HEAD AS SHOWN ABOVE. LOOSLY TIGHTEN



9) CHECK ALIGNMENT AND CLEARANCE OF MUFFLER THEN TIGHTEN ALL BOLTS & CLAMP



10) REFIT PANEL, SIT ON SCOOTER AND BOUNCE, CHECK CLEARANCE BEFORE USE.

**ENJOY ! Please share your reviews on Facebook :)**